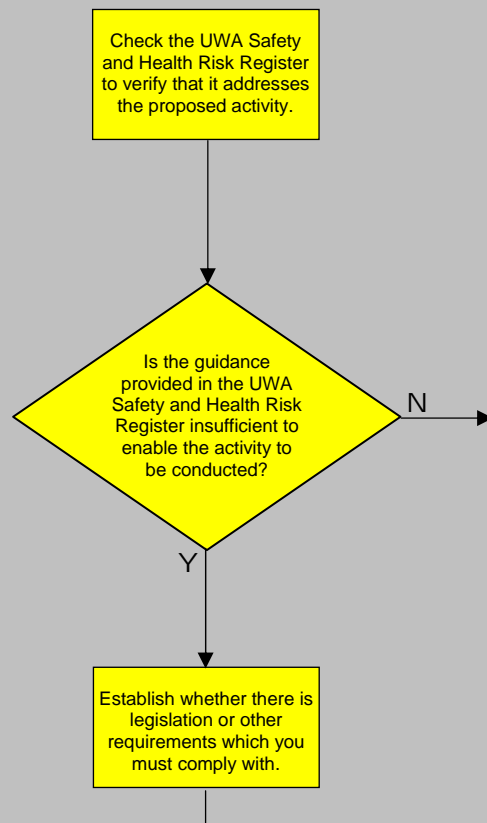


**OUTER RISK SHELL
ASSESSMENT OF WORKING ENVIRONMENT OR CATEGORY OF WORK**

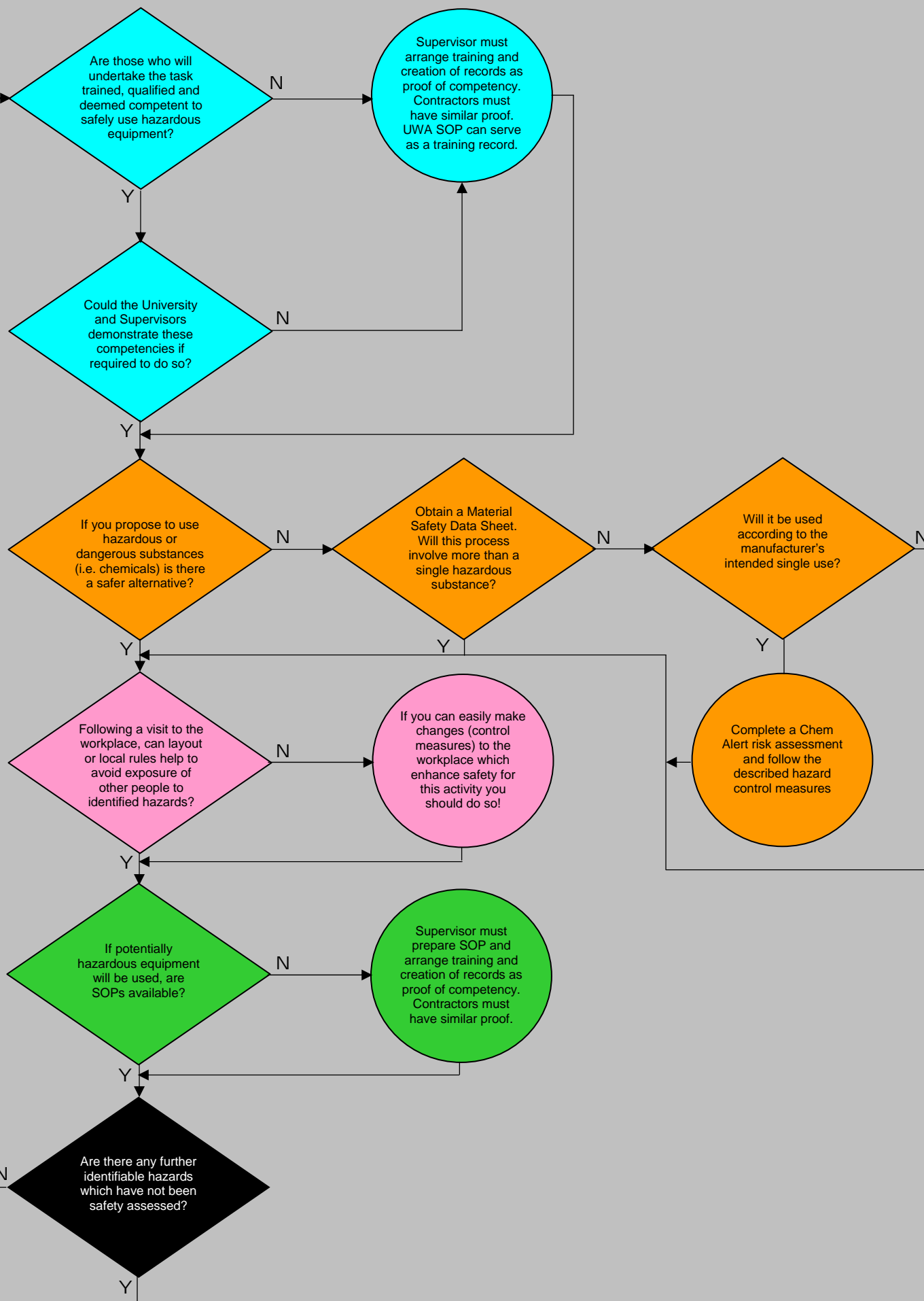


HIGHEST LEVEL GENERAL RISK ASSESSMENT OF WORKING ENVIRONMENT OR CATEGORY OF WORK
ITS USE DEMONSTRATES COMPLIANCE WITH LEGISLATION / UWA POLICIES AND PROCEDURES

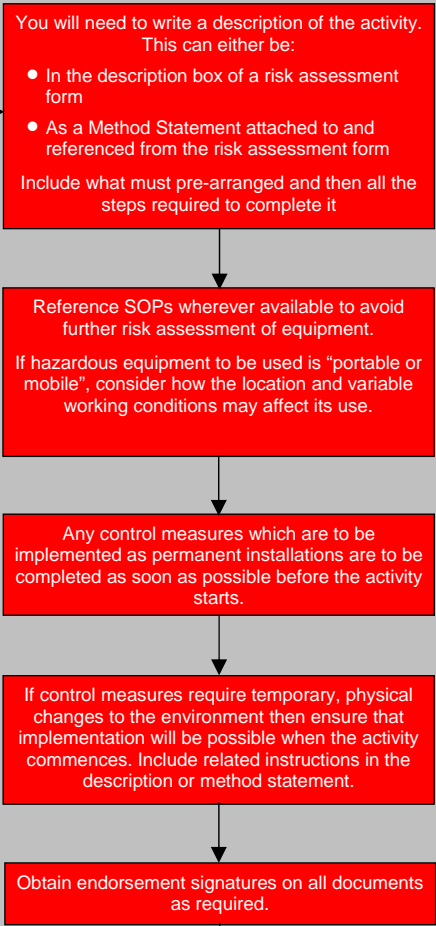
JOB SAFETY ANALYSIS WAIVER



**MIDDLE RISK SHELL
ASSESSMENT OF RESOURCES**



**INNER RISK SHELL
JOB SAFETY ANALYSIS
(PREVIOUSLY UNASSESSED RISKS)**

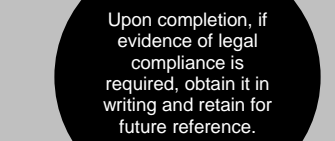
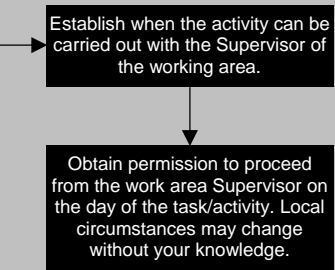


TASK AND ACTIVITY PLANNING IN A SAFE SYSTEM OF WORK

The following tools are available in the Task and Activity Planning Toolkit:

- UWA SAFETY AND HEALTH RISK REGISTER
- Pro-forma STANDARD OPERATING PROCEDURE (SOP)
- Pro-forma METHOD STATEMENT
- RISK ASSESSMENT FORMS
- Pro-forma HEALTH AND SAFETY MANUAL

PERMISSION TO CARRY OUT THE ACTIVITY



LEGAL COMPLIANCE VERIFICATION

Task and Activity Planning in a Safe System of Work	Published: May 2012 Review: May 2017	Version 1.4 Page 1 of 1
---	---	----------------------------

This document is uncontrolled when printed. For current version refer to Safety and Health website